
PROJECT REPORT

Application case 1

***(Pyongtaek thermal power plant of
KEPCO in KOREA)***

(On the ceramics surface)

Working Procedure of GI-180 System



Surface Repair (Epoxy Mortar;GInsulation-183)



Epoxy Primer(GInsulation-181)



Mixing (GInsulation-180)



Glass Block working (GI-180)

Application



Surface Repair



Primer



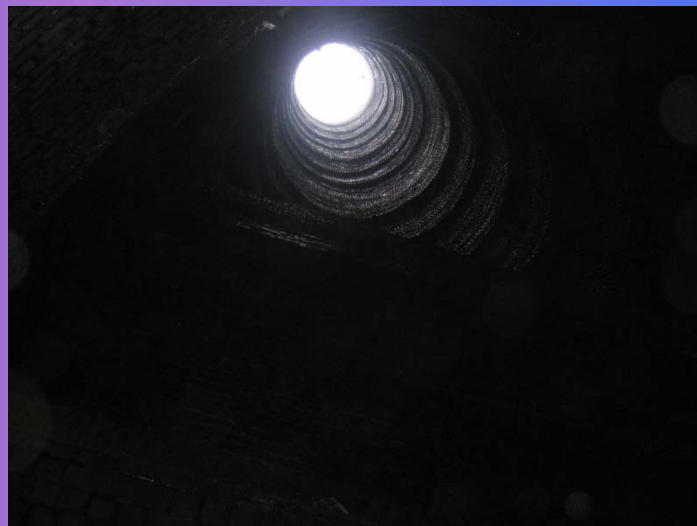
Brick working



Finish



After lining



Working Preparation(2)



Finish Working (Top & Bottom)



Top finish of chimney



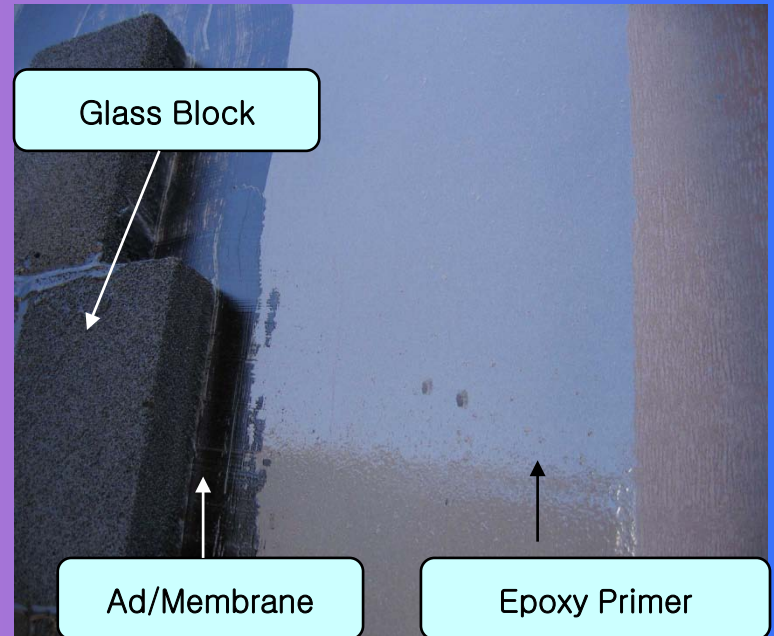
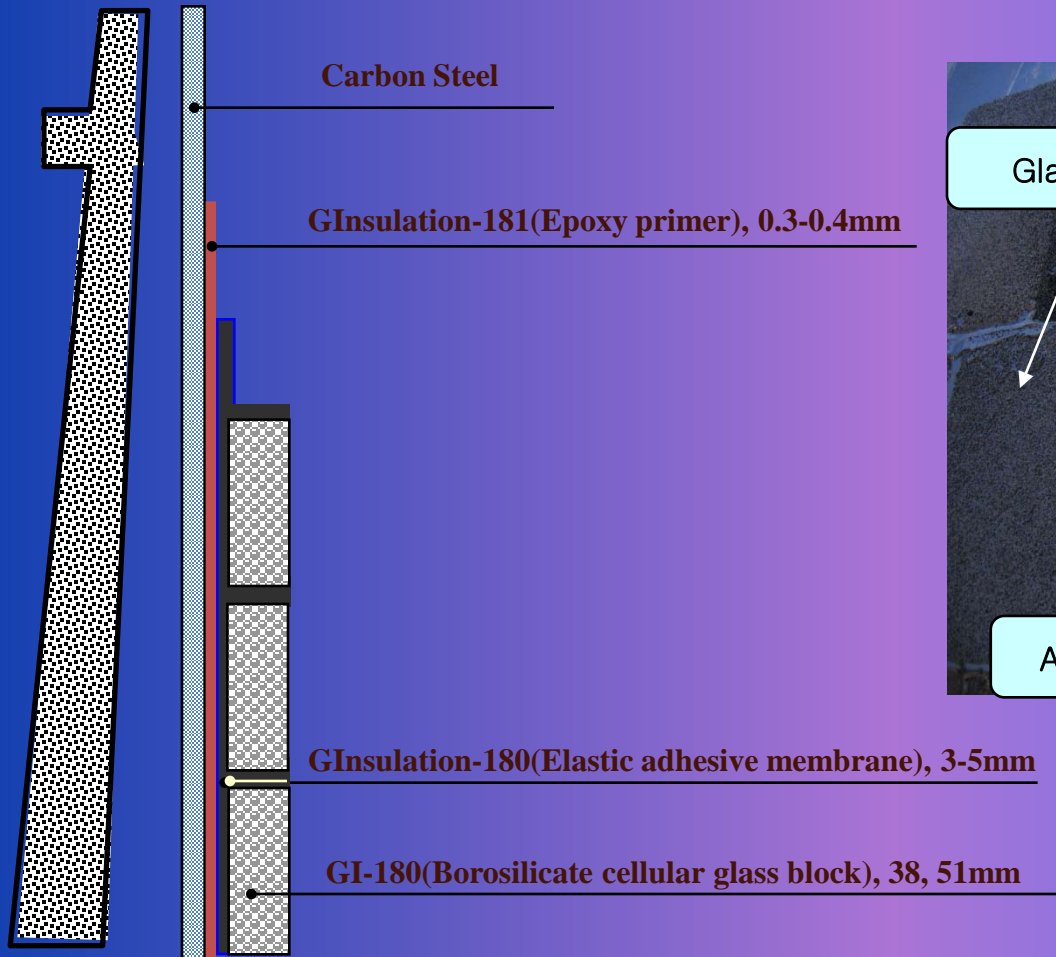
Bottom finish (drain)

Application case 2

***(Flue gas Desulphurization project
JEDDAH plant Stage 4, SWCC KSA)***

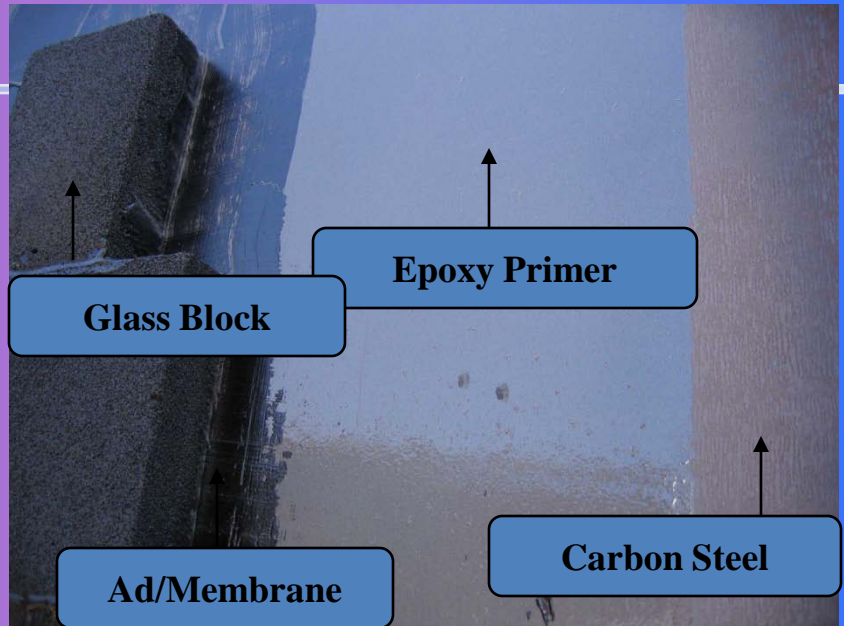
(On the carbon steel surface)

Materials for GI-180 system on the Carbon steel





Application



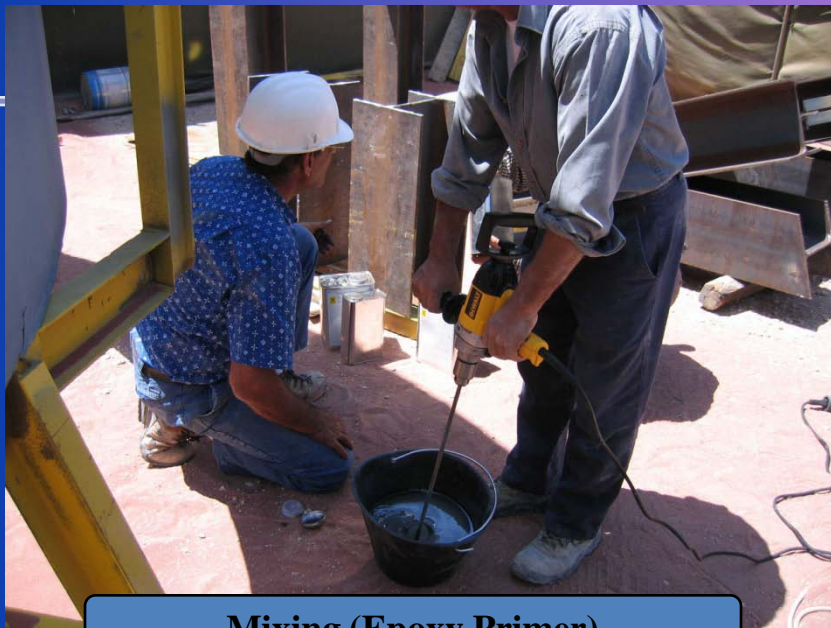
Glass Block

Epoxy Primer

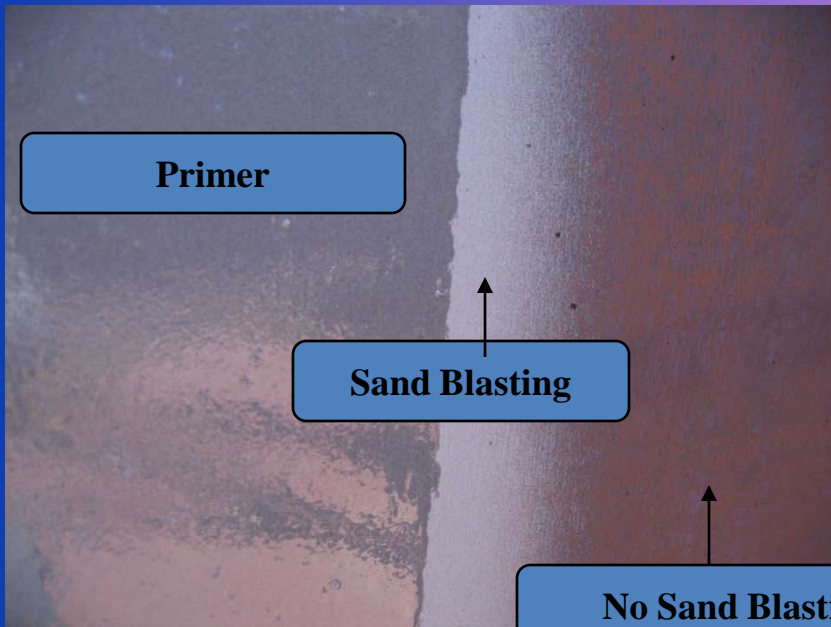
Ad/Membrane

Carbon Steel





Mixing (Epoxy Primer)



Primer

Sand Blasting

No Sand Blasting



Finished Priming



Mixing (Ad/Membrane)



Block Working



Client (PM, SWCC)

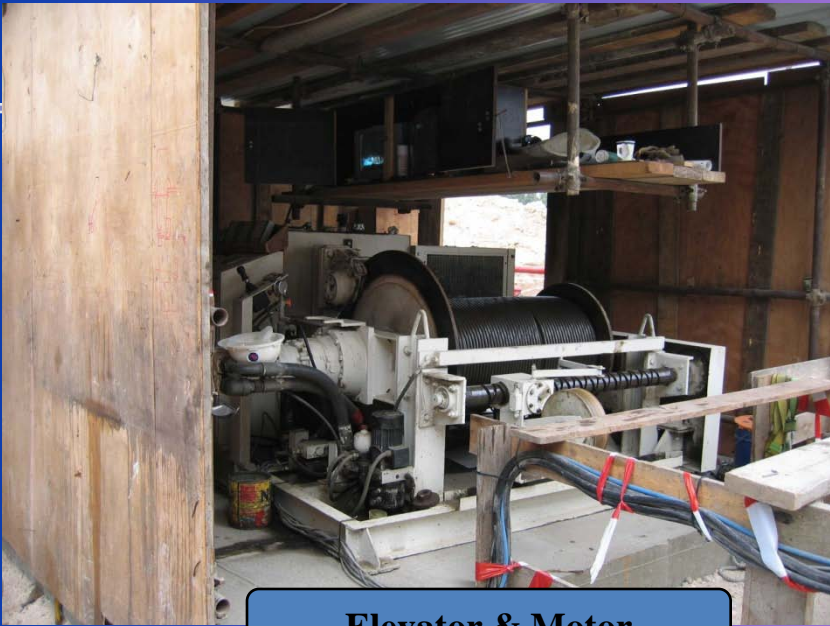


With End Client (SWCC)

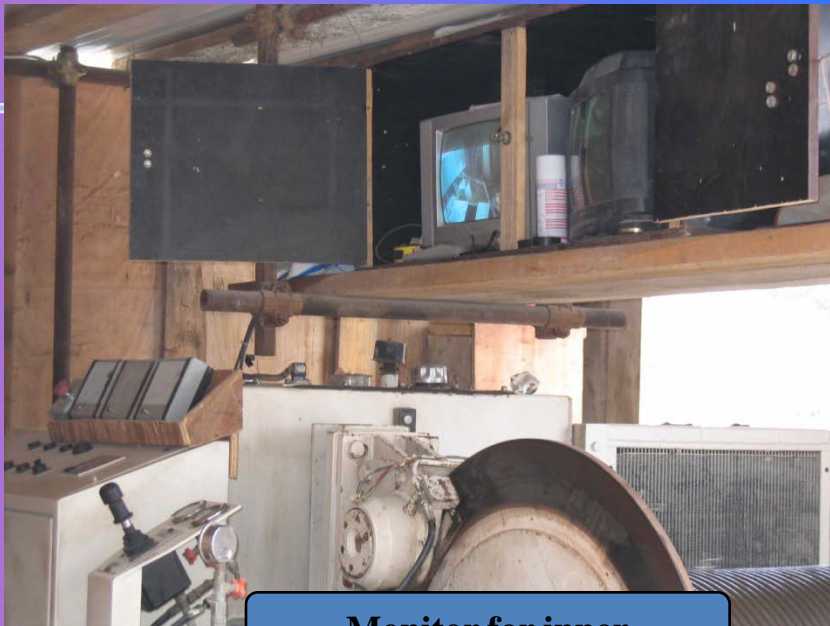


Setup Steel can





Elevator & Motor



Monitor for inner



Outside



CRI construction manager

Application case 3

*(Flue gas Desulphurization project,
Marafiq, KSA)*

(On the carbon steel surface)

